

*Just to say thank you!*

As this is our first catalogue, we'd love to give you the chance to see just how well-made and high quality our products really are.

Reference the code  
TLS642 when ordering

10% OFF YOUR  
FIRST ORDER!



Total Laboratory Services Ltd  
14C Sunrise Business Park  
Blandford Forum  
Dorset DT11 8ST

Tel: 01258 861817  
Fax: 08455 190273  
sales@totallaboratoryservices.co.uk  
www.totallaboratoryservices.co.uk



# Dissolution

## Accessories & Consumables

USP, EP & JP  
COMPLIANT

ALL LEADING  
MANUFACTURERS

DISINTEGRATION  
TESTERS



UK-Wide Delivery

**TLS**  
TOTAL LABORATORY SERVICES

# WELCOME...

Did you know that TLS can supply all your dissolution and disintegration parts, consumables and accessories? We are your total laboratory service and one-stop-shop for all dissolution and disintegration testing requirements.

We have a large range of accessories and consumables applicable to most testing scenarios and compatible with all the leading manufacturers. All our products are made to excellent standards, are durable, and wherever possible individually serialised for help with compliance and documentation.

Inside you'll find glassware, sinkers, USP apparatus, cannulas, meshes and much more to keep your dissolution and disintegration testers running smoothly. We're always happy to receive enquiries and offer advice, so please do get in touch if you think we can help.

**sales@totallaboratoryservices.co.uk** or call  
**01258 861817**

*The TLS Team*



**Dissolution Essentials:** Everything you need, from one supplier base.



**Disintegration Must-haves:** Tubing, mesh and full basket racks available.

## I'm looking for...

Dissolution Baskets.....	2	Sampling Cannulae & Stoppers.....	21
Basket Shafts.....	5	Storage Racks and Holders.....	27
Biodissolution Accessories USP3.....	9	Transdermal USP5 & 6.....	27
Capsule Sinkers.....	10	Tubing.....	28
Custom Manufacturing.....	12	Validation Tools.....	29
Disintegration Accessories.....	12	Vessels.....	30
Dissolution Filters.....	13	Vessel Covers & Accessories.....	34
Intrinsic Dissolution.....	17	Volumetric Flasks.....	37
Paddles.....	17	Other.....	37

## HPLC Pumps

Analytical,  
Clinical,  
Preparative,  
Fluid-metering

**VISIT OUR WEBSITE  
TO VIEW THE RANGE**



**PROVEN PISTON  
TECHNOLOGY**

**STAINLESS STEEL  
OR PEEK MATERIAL**

**VOLUME & FLOW  
RATE ACCURACY**



**Spare parts on demand:** Parts and accessories delivered to your door.

**[www.totallaboratoryservices.co.uk](http://www.totallaboratoryservices.co.uk)**



## Volumetric Flasks

Part No.	Description	OEM ref
VOLFLK-05	500ml Volumetric Flask Class A Calibrated at 20°C. Calibrated 'To Contain' and 'To Deliver'.	-
VOLFLK-X5	500ml Volumetric Flask Class A Calibrated at 37°C. Calibrated 'To Contain' and 'To Deliver'.	-
VOLFLK-09	900ml Volumetric Flask Class A Calibrated at 20°C. Calibrated 'To Contain' and 'To Deliver'.	-
VOLFLK-X9	900ml Volumetric Flask Class A Calibrated at 37°C. Calibrated 'To Contain' and 'To Deliver'.	-
VOLFLK-1K	1000ml Volumetric Flask Class A Calibrated at 20°C. Calibrated 'To Contain' and 'To Deliver'.	-
VOLFLK-X1	1000ml Volumetric Flask Class A Calibrated at 37°C. Calibrated 'To Contain' and 'To Deliver'.	-



VOLFLK-05



VOLFLK-1K

## Other

### Luer Fittings

Part No.	Description	OEM ref
2301	Female 1/4 x 28 Thread to Female 1/4 x 28 Thread Polypropylene Union	-
ABSML-6-1	Male 1/4 x 28 Thread to Male Luer with Locking Nut	-
BSFTLL-6	Male 1/4 x 28 Thread to Female Luer (Bottom Sealing Thread)	-
FTLLC-6	Female Luer to Female Luer Polypropylene Coupler	-
LE87-6	Female Luer to Male Luer (Elbow)	-
SFTLL-6	Male 1/4 x 28 Thread to Female Luer	-
SMTLL-6	Male 1/4 x 28 Thread to Male Luer	-



2301



ABSML-6-1



SMTLL-6

## Dissolution Baskets

### Caleva

Part No.	Description	OEM ref
BSK010-CA	10 Mesh Stainless Steel Basket	0810123
BSK020-CA	20 Mesh Stainless Steel Basket	0810021
BSK040-CA	40 Mesh Stainless Steel Basket	0810019
BSK150-CA	150 Mesh Stainless Steel Basket	0203091
BSKSUP-CA	Suppository Basket, Plastic	-



10 Mesh

### Distek

Part No.	Description	OEM ref
BSK010-DK	10 Mesh Stainless Steel Basket	2821-0160
BSK010-DKC	10 Mesh Stainless Steel Basket, Evolution Series	2800-0041
BSK020-DK	20 Mesh Stainless Steel Basket	2821-0159
BSK020-DKC	20 Mesh Stainless Steel Basket, Evolution Series	2800-0042
BSK040-DK	40 Mesh Stainless Steel Basket	2821-0072
BSK040-DKC	40 Mesh Stainless Steel Basket, Evolution Series	2800-0032
BSK100-DK	100 Mesh Stainless Steel Basket	-
BSK100-DKC	100 Mesh Stainless Steel Basket, Evolution Series	-
BSKPTD-40	40 Mesh PTFE Coated Basket	-
BSKSUP-DK	Suppository Basket, Plastic	3250-0445



20 Mesh



40 Mesh

### Erweka

Part No.	Description	OEM ref
BSK010-EW	10 Mesh Stainless Steel Basket	-
BSK020-EW	20 Mesh Stainless Steel Basket	90-000-0015
BSK040-EW	40 Mesh Stainless Steel Basket	90-000-0040
BSK100-EW	100 Mesh Stainless Steel Basket	-
BSK150-EW	150 Mesh Stainless Steel Basket	-
BSKSUP-EW	Suppository Basket, Plastic	-



150 Mesh

## Hanson

Part No.	Description	OEM ref
BSK010-HR	10 Mesh Stainless Steel Basket	65-220-010
BSK020-HR	20 Mesh Stainless Steel Basket	65-220-020
BSK040-HR	40 Mesh Stainless Steel Basket	65-220-000
BSKPTH-40	40 Mesh PTFE Coated Basket	-
BSK100-HR	100 Mesh Stainless Steel Basket	-
BSK150-HR	150 Mesh Stainless Steel Basket	-
BSKSUP-HR	Suppository Basket, Plastic	65-700-048



Suppository Basket

## Pharmatest

Part No.	Description	OEM ref
BSK010-PT	10 Mesh Stainless Steel Basket	311-2804
BSK020-PT	20 Mesh Stainless Steel Basket,	-
BSK040-PT	40 Mesh Stainless Steel Basket	311-2803
BSKSUP-PT	Suppository Basket, Plastic	-



10 Mesh

## Sotax

Part No.	Description	OEM ref
BSK010-ST	10 Mesh Stainless Steel Basket	-
BSK020-ST	20 Mesh Stainless Steel Basket	-
BSK040-ST	40 Mesh Stainless Steel Basket	2830
BSK150-ST	150 Mesh Stainless Steel Basket	-
BSKSUP-ST	Suppository Basket, Plastic	-



20 Mesh

## Vankel/Varian/Agilent

Part No.	Description	OEM ref
BSK010-01	10 Mesh Stainless Steel Basket	12-2125
BSK020-01	20 Mesh Stainless Steel Basket	12-2120
BSK040-01	40 Mesh Stainless Steel Basket	12-2100
BSK040-01PL	40 Mesh Precision Length Stainless Steel Basket	-
BSKPTV-40	40 Mesh PTFE Coated Basket	12-2110
BSK100-01	100 Mesh Stainless Steel Basket	12-2154
BSK150-01	150 Mesh Stainless Steel Basket	12-2152
BSKSUP-01	Suppository Basket, Plastic	12-2130



40 Mesh

## Vankel/Varian/Agilent continued

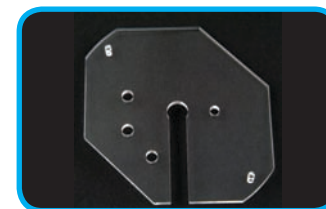
Part No.	Description	OEM ref
COVERV-LLVSV	Low Evaporation Hinged Vessel Cover with Conical Shape for V-Series fitted with TruCentre Bracket	-
COVERV-HG-1	Low Evaporation Hinged Vessel Cover with Extra Cannulae Hole	-
COVERV-01SB	Clear Vessel Cover with Paddle Slot and Hole for Stationary Basket Apparatus	-
EZLKIT-01	VanKel Vessel Centering Bracket Repair Kit (12 Pins)	-
EZLBKT-01	VanKel Vessel Centering Bracket with replaceable pins (6 Pins).	12-6050
VK600A-CR	Plastic Vessel Centering Ring Assembly for VK600/6000 Series	12-6000
COVERV-02	Amber Vessel Cover with Paddle Slot	12-6320
COVERV-03	Clear Solid Vessel Cover	12-6330
COVERV-04	Evaporation Vessel Cover for Dosage Delivery Module	12-6310
COVERV-6K	Evaporation Vessel Cover for VK600/VK6000 Series	-
COVERV-LLHG	Low Evaporation Hinged Conical Shape Vessel Cover	12-6327
COVERV-LL	Low Evaporation Vessel Cover	12-0469
COVHGV-SB	Vessel Cover for Suspended Basket Apparatus	-
COVERV-LLSB	Low Evaporation Vessel Cover for Suspended Basket Apparatus	-
SMVCVR-UN	Small Volume Vessel Cover, fits SMVASSY small volume vessel adaptors	-



COVERV-01SB



EZLBKT-01



COVERV-6K



COVERV-LL

## Zymark/Caliper

Part No.	Description	OEM ref
EZLPEG-01	EZ Line Centering Peg	12-6065
CNTRNG-ZM	Multi-Dose Centering Ring	-



CNTRNG-ZM



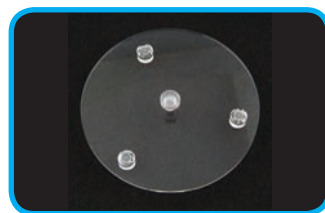
EZLPEG-01

## Hanson

Part No.	Description	OEM ref
COVERH-00	Low Evaporation Rotary Vessel Cover	65-233-170
COVER-HR	Low Evaporation Easi-Lock Vessel Cover	74-104-151
COVERH-LLHG	Low Evaporation Hinged Conical Shape Vessel Cover	12-6327
COVHGH-SB	Suspended Basket Apparatus Vessel Cover	-
COVERH-LL	Low Loss Evaporation Vessel Cover	3250-0070
COVERH-HG	Low Evaporation Hinged Vessel Cover	-
COVERH-04	Clear Solid Vessel Cover	-
COVERH-03	Amber Vessel Cover with Paddle Slot	-
COVERH-02	Grey Vessel Cover with Paddle Slot	72-800-603
COVERH-01	Clear Vessel Cover with Paddle Slot	72-500-215
SMVCVR-UN	Small Volume Vessel Cover, fits SMVASSY small volume vessel adaptors	-



COVERH-00



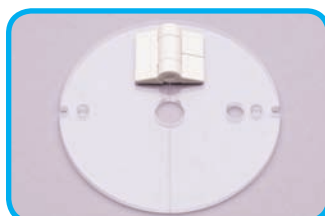
COVERH-04



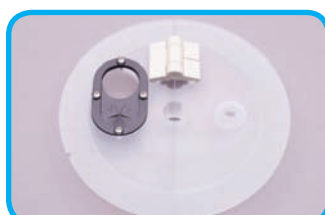
SMVCVR-UN

## Vankel/Varian/Agilent

Part No.	Description	OEM ref
COVERV-01	Clear Vessel Cover with Paddle Slot	12-6300
EZLPEG-01	EZ Line Centering Peg for VanKel Baths	12-6065
COVERV-00	Low Evaporation Rotary Vessel Cover	-
COVERV-HG	Low Evaporation Hinged Vessel Cover	-
COVERV-LLVS	Low Evaporation Hinged Vessel Cover with Conical Shape for V-Series	-
COVERV-LLVSB	Low Evaporation Vessel Cover for Suspended Basket Apparatus. Conical Shape. V-Series Testers with Tru-Center Vessel	-



COVERV-HG



COVERV-LLVSB

## Stationary Baskets

Part No.	Description	OEM ref
STABSK-10	Stationary Basket Assembly with Basket Shaft and 10 Mesh Basket	12-2061
STABSK-20	Stationary Basket Assembly with Basket Shaft and 20 Mesh Basket	12-2060
STABSK-40	Stationary Basket Assembly with Basket Shaft and 40 Mesh Basket	12-2063
STABSK-VK8	USP 26 Felodipine Test Stationary Basket	12-2069
DEPSET-SB	Stationary Basket Spacer, 1cm	-
COVDHG-SB	Clear Stationary Basket Apparatus Hinged Cover for Distek Baths	3250-0081
COVHGV-SB	Clear Stationary Basket Apparatus Hinged Cover for VanKel Baths	-
COVERV-LLSB	Clear low loss evaporation cover for stationary baskets for VanKel Baths	-



Stationary Basket & Shaft



USP 26 Felodipine



COVERV-LLSB

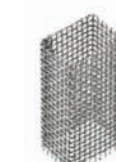
## Basket Tool for Holding Baskets Without Touching Them

Part No.	Description	OEM ref
BSKTOOL	Can be used with any standard size basket without damage	-



## Special Baskets

Part No.	Description	OEM ref
VERTHLD-750	Basket insert for testing of Metformin. Compatible with any dissolution tester	-
MINBSK-40	Mini Basket, 40 Mesh, for Small Volume Applications	-
CUSTBSK-40	Basket for Dabigatran Etexilate Mesylate. 24.5mm opening. Requires a custom shaft and basket hub.	-



Metformin Basket



Dabigatran Etexilate Mesylate Basket



Mini Basket

## Custom baskets made to your specification...

Can't find what you're looking for? It's not a problem, there are many other options available for dissolution baskets, and we can manufacture and supply plenty of other mesh sizes and coatings, just let us know what it is that you need, and we'll do the rest.



## Basket Shafts

### Distek

Part No.	Description	OEM ref
BSDRNG-16	16.5" (420mm) O-Ring Style Basket Shaft	2821-0074
BSHT16-02	16.5" (420mm) Spring Clip Style Basket Shaft	-
BSDRNG-19	19" (480mm) O-Ring Style Basket Shaft	2821-0097
SHFT16.5-DK	16.5" (420mm) Detachable Shaft	2800-0165
BSKHUB-DK	Basket Adaptor, O-Ring Style	2851-1052
BSKHUB-DKC	Basket Adaptor, Evolution Series Only	3200-0038
BSKCLP-DK	Basket Clip, Evolution Series Only	3100-0017



### Erweka

Part No.	Description	OEM ref
BSKSEW-15	15" Basket Shaft, 316SS	-
BSKSEW-19	19" Basket Shaft, 316SS	-
BSKHUB-EW	Basket Adapter for Screw On/Off Style shafts	-



### Hanson

Part No.	Description	OEM ref
BSKSHT-16	16" (405mm) Spring Clip Basket Shaft	65-237-000



## Vessel Covers & Accessories

### Distek

Part No.	Description	OEM ref
COVERD-01	Clear Hinged Vessel Cover	3250-0089
COVERD-02	Amber Hinged Vessel Cover	3250-0054
COVERD-HG	Low Evaporation Hinged Vessel Cover	-
COVDHG-SB	Suspended Basket Apparatus Vessel Cover	-
COVERD-BK	Clear Hinged Cover With /Large Center Hole for Basket Access	3250-0070
COVCAP-AD	Amber Cap for Easy Basket Access Cover	-
SMVCVR-UN	Small Volume Vessel Cover, fits SMVASSY small volume vessel adaptors	-
COVERAD-BK	Amber Hinged Cover With / Large Center Hole for Easy Basket Access	-
COVERD-00	Low Evaporation Rotary Vessel Cover	-
COVCAP-DK	Clear Cap for Distek Easy Basket Access Cover COVERD-BK	3250-0019
COVERD-01EH	Clear Hinged Vessel Cover with Extra Sampling Probe Hole	3250-0089
COVERD-02EH	Amber Hinged Vessel Cover with Extra Hole for Additional Sampling or Return Probe	3250-0054
COVPLG-DK	Probe Hole Plug for Distek Vessel Covers	5720-4037
HINGE-DK	Replacement Hinge for Distek Vessel Covers	5560-6011
COVPLG-7D	7th Position Vessel Cover Plug	3350-0109
RING01-DK	Vessel Centering Ring	3350-0096
VSCLIP-DK	Vessel Retainer Assembly for Distek 2100	2821-0257



COVERD-01



COVERD-BK



COVERD-00



COVPLG-7D

### Erweka

Part No.	Description	OEM ref
COVERD-EW	Clear Hinged Vessel Cover	-
RING01-EW	Vessel Centering Ring	-



COVERD-EW



## Vankel/Varian/Agilent *continued*

Part No.	Description	OEM ref
ASTM900-A70XDS	UltraCenter 1000ml Amber Glass Vessels offer ultimate control of dissolution variables and assist calibration to ASTM E 2503-07. 708-DS models only.	-
GLA900-A70XDS	1000ml Amber Glass Dissolution Vessel with Plastic Rim for Model 708-DS	12-5152
GLA900-01	1000ml Clear Glass Vessel	12-5000
GLA900-AV	1000ml Amber Glass Vessel	12-5010
GLA900-VK	1000ml Clear Glass Vessel for V-Series Baths	-
GLA9PK-VK	1000ml Clear Glass PEAK Vessel for V-Series Baths	12-5125
ASTM900-UN_V	UltraCenter 1000ml Clear Glass Vessels offer ultimate control of dissolution variables and assist calibration to ASTM E 2503-07.	-
ASTM900-UN-AM-V	UltraCenter 1000ml Amber Glass Vessels offer ultimate control of dissolution variables and assist calibration to ASTM E 2503-07.	-
GLA9PK-01	1000ml Clear Glass PEAK Vessel	12-5500
GLA9AM-VK	1000ml Amber Glass Vessel for V-Series Baths	-
GLA200-VK	200ml Clear Glass Vessel for Small Volume Dissolution	-
GLA100-VK	100ml Clear Glass Vessel for Small Volume Dissolution.	-
PLA900-AV	1000ml Amber Plastic Vessel with Feet	-
PLA900-01	1000ml Clear Plastic Vessel with Feet	12-5200
GLA500-01	500ml Clear Glass Vessel	12-5060
GLA02K-01	2000ml Clear Glass Vessel	12-5070
GLA9PK-AV	1000ml Amber Glass PEAK Vessel	-



GLA900-VK



GLA90AM-VK



GLA200-VK



PLA900-01

## Zymark/Caliper

Part No.	Description	OEM ref
GLA9CR-AZM	1000ml Clear Glass Vessel	-
GLA9CR-ZM	1000ml Clear Glass Vessel with Centring Ring	58730



GLA9CR-AZM

## Vankel/Varian/Agilent

Part No.	Description	OEM ref
BSKSHT-13	14.5" (330mm) Spring Clip Style Basket Shaft	12-2073
BSKSHT-15	15" (380mm) Spring Clip Style Basket Shaft	12-2070
BSKSHT-15C	15" (380mm) Spring Clip Style Conical Basket Shaft	12-2075
BSKSHT-15CO	15" (380mm) O-Ring Style Conical Basket Shaft	12-2050
BSKSHT-19	19" (480mm) Spring Clip Style Basket Shaft	12-2080
BSKSHT-19C	19" (480mm) Spring Clip Style Conical Basket Shaft	-
BSKSHT-19CO	19" (480mm) O-Ring Style Conical Basket Shaft	-
BSKSHT-21	21 inch Spring-clip Style Basket Shaft	12-2200
BSKSHT-24	24 inch Spring-clip Style Basket Shaft	12-2095



BSKSHT-15C



BSKSHT-15CO



BSKSHT-24

## Spin Shafts

### Distek

Part No.	Description	OEM ref
SPNRNG-DK	Spin On/Off Basket Shaft, O-Ring Push-On Style for Distek Use with SPNSHT-16.5	-
SPNSHT-16.5	Spin On/Off Shaft, 16.5 inches, for Distek. Use with SPNRNG-DK	-
SHTCOL-DK	Shaft Collar, 3/8", for Distek Paddle and Basket Shafts, with 7/64" Hex Key	-



SPNRNG-DK



SPNSHT-16.5



SHTCOL-DK

### Erweka

Part No.	Description	OEM ref
SPNSHT-7EW	Spin On/Off Shaft, 7 inches, for Erweka Low Head Dissolution Tester	-



SPNSHT-7EW

## Erweka continued

Part No.	Description	OEM ref
SPNSHT-7EW	Spin On/Off Shaft, 7 inches, for Erweka Low Head Dissolution Tester	-
SPNTPD-EW	Spin On/Off Paddle, Solid PTFE Moulded, for Erweka	-
SPNSHT-15EW	Spin On/Off Shaft, 15 inches, for Erweka High Head Dissolution Testers	-
SPNEPD-EW	Spin On/Off Paddle, 316 Stainless Steel	-
SPNBSK-EW	Spin On/Off Basket Shaft, Spring Clip Style	-



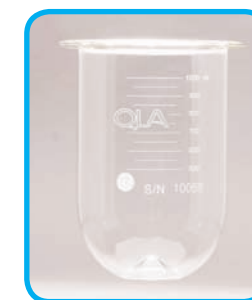
## Hanson

Part No.	Description	OEM ref
SPNBSK-HR	Spin On/Off Basket Shaft, Spring Clip Style for Hanson Research	-
MINBSHAFT	Small Volume Basket Shaft. Use with Mini Basket	-
74-105-213	Spin On/Off Mini Paddle, Kynar Coated, for Hanson Vision Series	74-105-213
74-105-214	Spin On/Off Mini Paddle, 316 Stainless Steel, for Hanson Vision	74-105-214
BSKSHT-HR	Spin On/Off Basket Shaft, Spring Clip Style for Hanson Vision	74-105-251
NDT12-HR	Spin On/Off Shaft, 12 inches, for Hanson Dissolution Testers	74-205-049
NDT10-HR	Spin On/Off Shaft, 10 inches Small Volume Upper Shaft	74-105-050
LCB15-HR	Spin On/Off Shaft, 15 inches, for Hanson Dissolution Testers	74-205-050
74-105-371	Spin On/Off Basket Shaft, Spring Clip Style for Hanson Vision Series for 2 Litre Vessels	74-105-371
74-105-351	Spin On/Off Paddle, Solid PTFE Moulded, for Hanson Vision Series. Single piece design for 2 Litre Vessels	74-105-351
74-105-361	Spin On/Off Paddle, 316 Stainless Steel, for Hanson Vision Series for 2 Litre Vessels	74-105-361



## Hanson continued

Part No.	Description	OEM ref
ASTM900-UN-AM-H	UltraCenter 1000ml Amber Glass Vessels offer ultimate control of dissolution variables and assist with calibration to ASTM E 2503-07 requirements	-
GLA9PK-HR	1000ml Clear Glass PEAK Vessel	-
PLA900-AH	1000ml Amber Plastic Vessel with Feet	-
PLA900-HR	1000ml Clear Plastic Vessel with Feet	-
GLA02K-HR	2000ml Clear Glass Vessel	72-600-509
GLA500-HR	500ml Clear Glass Vessel - only for water-bath models	-
GLA200-HR	200ml Clear Glass Vessel for Distek Small Volume Dissolution	-
GLA100-HR	100ml Clear Glass Vessel.	-



GLA9PK-HR



GLA500-HR

## Pharmatest

Part No.	Description	OEM ref
GLA900-PT	1000ml Clear Glass Vessel	1303-5225
PLA900-PT	1000ml Clear Plastic Vessel with Feet	-
GLA900-APT	1000ml Amber Glass Vessel	80-000-1004



GLA900-PT

## Sotax

Part No.	Description	OEM ref
GLA900-ST	1000ml Clear Glass Vessel	2503
GLA900-AST	1000ml Amber Glass Vessel	-



GLA900-ST

## Vankel/Varian/Agilent

Part No.	Description	OEM ref
ASTM900-70DXS	UltraCenter 1000ml Clear Glass Vessels offer ultimate control of dissolution variables and assist calibration to ASTM E 2503-07. 708-DS models only.	12-1501
GLA900-70XDS	1000ml Clear Glass Vessel with Plastic Rim for Model 708-DS	12-5149



GLA900-70XDS



## Distek continued

Part No.	Description	OEM ref
GLA100-DK	100ml Clear Glass Vessel	-
GLA02K-DK	2000ml Clear Glass Vessel	3010-0285
GLA200-DK	200ml Clear Glass Vessel for Distek Small Volume Dissolution	-
RING01-DK	Vessel Centering Ring for Distek Water Baths	3350-0096



GLA100-DK

## Erweka

Part No.	Description	OEM ref
GLA02K-EW	2000ml Clear Glass Vessel	80-000-2002
GLA900-EW	1000ml Clear Glass Vessel	80-000-1002
PLA900-EW	1000ml Erweka Compatible Clear Plastic Dissolution Vessel with Feet	80-000-1001
GLA900-AEW	1000ml Amber Glass Vessel	80-000-1004
ASTM900-UN_EW	UltraCenter 1000ml Clear Glass Vessels offer ultimate control of dissolution variables and assist with calibration to ASTM E 2503-07 requirements	-
RING01-EW	Vessel Centering Ring for Erweka Baths	-



GLA02K-EW



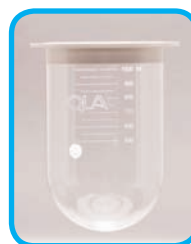
GLA900-EW

## Hanson

Part No.	Description	OEM ref
GLA900-HR	1000ml Clear Glass Vessel	72-600-510
NDTVES-40	1000ml Clear Glass Vessel. Vision series only.	74-104-101
NDTVES-40AH	1000ml Amber Glass Vessel. Vision series only.	74-104-102
GLA900-AH	1000ml Amber Glass Vessel.	72-6000-556
ASTM900-UN_H	UltraCenter 1000ml Clear Glass Vessels offer ultimate control of dissolution variables and assist with calibration to ASTM E 2503-07 requirements	-



NDTVES-40AH



ASTM900-UN\_H

## Hanson continued

Part No.	Description	OEM ref
EPDSHT-HR	Spin On/Off Paddle, 316 Stainless Steel, for Hanson Vision Series for 1 Litre Vessels	74-105-202
TPDSHT-HR	Spin On/Off Paddle, Solid PTFE Moulded, for Hanson Vision Series. Single piece design for 1 Litre Vessels	74-105-201
SPNSHT-16	Spin On/Off Shaft, 16 inches, for Hanson Research	-



TPDSHT-HR



SPNSHT-16

## Vankel/Varian/Agilent

Part No.	Description	OEM ref
SPNBSK-01	Spin On/Off Basket Shaft, Spring Clip Style for VanKel. Not V-Series	12-1430
SPNRNG-01	Spin On/Off Basket Shaft, O-Ring Push-On Style for Agilent/ VanKel	12-1431
SPNSHT-21	Spin On/Off Shaft, 21 inches, for Agilent 708-DS/709-DS. Not Suitable for V-Series	13-3613
SPNSHT-13	Spin On/Off Shaft, for VanKel V-Series & 7010 Series	-
SPNSHT-24	Spin On/Off Shaft, 24 inches, for Agilent/VanKel 7010 series, 708-DS/709-DS. Not Suitable for V-Series	12-1402
SPNSHT-19	Spin On/Off Shaft, 19 inches, for VanKel. Not Suitable for V-Series	12-1401
SPNSHT-15	Spin On/Off Shaft, 15 inches, for 7010 Series and 708-DS/709-DS. Not Suitable for V-Series	12-1400
SPNTPD-01	Spin On/Off Paddle, Solid PTFE Moulded, for Agilent/VanKel	13-3606
SPNNPD-01	Spin On/Off Paddle, PTFE Coated, for Agilent/VanKel	12-1420
SPNEPD-01	Spin On/Off Paddle, for Agilent/ VanKel	12-1421



SPNBSK-01



SPNRNG-01



SPNSHT-24



SPNTPD-01



SPNEPD-01

### Can't find what you're looking for?

It's not a problem, there are many other options available for dissolution shafts, and we can manufacture and supply plenty of other sizes. Just let us know what it is that you need, and we'll do the rest.

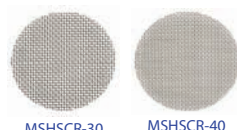
## Biodissolution Accessories USP 3

### Distek

Part No.	Description	OEM ref
MSHSCR-20	USP3 20 Mesh Stainless Steel Screen for 300ml Glass Vessels	27-2100
MSHSCR-30	30 Mesh Stainless Steel Screen for 300ml Glass Vessels	27-2103
MSHSCR-40	USP3 40 Mesh Stainless Steel Screen for 300ml Glass Vessels	27-2105
POLSCR-20	USP3 20 Mesh Polypropylene Screen for 300ml Glass Vessels	27-2000
POLSCR-30	USP3 30 Mesh Polypropylene Screen for 300ml Glass Vessels	-
POLSCR-40	USP3 40 Mesh Polypropylene Screen for 300ml Glass Vessels	27-2005
POLSCR-1K	USP3 100 Mesh Polypropylene Screen for 300ml Glass Vessels	27-2015
GLA300-AV	USP3 Outer Vessel 300ml Amber Glass	-
GLA300-03	USP3 Outer Vessel 300ml Clear Glass Class A	-
GLA300-02	USP3 Outer Vessel 300ml Clear Glass Graduated	27-5100
GLAIST-01	USP3 Inner Sampling Tube 100ml Clear Glass	27-5000
GLAIST-AV	USP3 Inner Sampling Tube 100ml Amber Glass	-
LOWCAP-03	USP3 Lower Cap for 300ml Glass Vessels	27-1020
UPPCAP-03	USP3, Upper Cap for 300ml Glass Vessels	27-1000
LOWCAP-05	USP3 Lower Cap for 300ml Glass Vessels Wider VanKel Style	27-1050
EVACOV-05	PVC Evaporation Cover for 300ml Glass Vessels	27-1500
EVACOV-07	PTFE Evaporation Cover for 300ml Glass Vessels	1005-1011



MSHSCR-20



MSHSCR-30

MSHSCR-40



GLAIST-AV



GLA300-AV



GLA300-03



EVACOV-07

### Can't find what you're looking for?

It's not a problem, there are other options available for Biodissolution and we can manufacture and supply plenty of other products. Just let us know what it is that you need, and we'll do the rest.

Part No.	Description	OEM ref
WOBMET-MI	Wobble Meter (inc. vessel cover and brackets) for most open top baths	-
VIBMET-UN	Vibration Meter with Probe and Case	-
THERMD-LC	Calibrated Digital Thermometer	-
WOBMET-HRV	Wobble Meter (inc. vessel cover and brackets) for Hanson Vision Baths	-



VIBMET-UN

## Vessels

### Caleva

Part No.	Description	OEM ref
GLA900-AC	1000ml Amber Glass Vessel	0810009
GLA900-CA	1000ml Clear Glass Vessel	203020



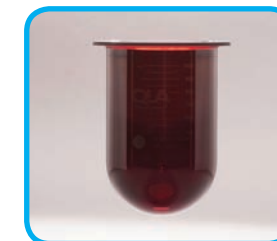
GLA900-CA

### Distek

Part No.	Description	OEM ref
GLA900-DK	1000ml Clear Glass Vessel	-
GLA9PK-DK	1000ml Clear Glass PEAK Vessel	3010-0050
ASTM900-UN_D	UltraCenter 1000ml Clear Glass Vessels offer ultimate control of dissolution variables and assist with calibration to ASTM E 2503-07 requirements	-
ASTM900-UN-AM-D	UltraCenter 1000ml Amber Glass Vessels offer ultimate control of dissolution variables and assist with calibration to ASTM E 2503-07 requirements	-
PLA900-DK	1000ml Distek Compatible Clear Plastic Dissolution Vessel with Feet	3350-0095
PLA900-AD	1000ml Distek Compatible Amber Plastic Dissolution Vessel with Feet	-
GLA9CR-DK	1000ml Clear Glass Dissolution Vessel with Centring Ring	3010-0093
GLA9CR-AD	1000ml Amber Glass Vessel	3010-0023
GLA500-DK	500ml Clear Glass Vessel - only for water-bath models	-



GLA900-DK



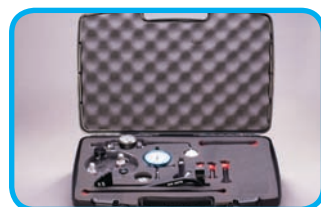
ASTM900-UN-AM-D



GLA9CR-DK

## Validation Tools

Part No.	Description	OEM ref
VALTOL-KT2	Validation Toolkit (centering gauge, depth set gauge, level, wobble meter, accessories)	-
VALTOL-ASTM	ASTM Validation Toolkit (centering gauge, depth set gauge, digital level and verticality meter, wobble meter, accessories)	-
ASTMBALL-25	25 mm Calibrated Ball for ASTM Height Validation/Setting; Serialized.	-
DEPSET1015	Ball Style Depth Setting Tool for Small Volumes. 10mm and 15mm Depth.	-
GNGDEP	Go/No Go Depth Check Tool - Simply fit the tool under the basket or paddle.	-
DEPSET-25	Depth Set Gauge - Hanson style. Simply fit the groove against the paddle or basket shaft and place in the bottom of the vessel.	91-902-048
CNTGAG-SV	Vessel Centering Gauge. For small volume dissolution 100ml/200ml. Please state bath model when ordering	-
DEPSET-SB	Stationary Basket Spacer, 1cm. For setting the correct height of the basket	-
DEPGAG-VK	Depth Set Gauge - VanKel Style	-
VERTMET-MI	Digital Verticality and Level Tester for ASTM Validation Testing	-
DDAPT-Q	Digital Depth Gauge Assembly. Accurately measures paddle or basket height in the vessel.	-
DEPSET-MI	Ball Style Depth Setting Tool for Paddles and Baskets. 25mm Certified Ball.	-
TACHOM-UN	Optical Tachometer for USP and ASTM Validation	-
LEVEL-UN	Universal Precision Spirit Level for Any Dissolution Bath	-
CNTGAG-MI	Vessel Centering Gauge. Please state bath model when ordering	-



VALTOL-KT2



VALTOL-ASTM



ASTMBALL-25



DEPSET-25



CNTGAG-MI



TACHOM-UN

## Capsule Sinkers

### Basket

Part No.	Description	OEM ref
CUSBSK-JP	Japanese Pharmacopeia Basket Sinker. USP certified. Stainless steel.	12-3070
CUSBSK-JPMAG	A Magnetic Version of the Japanese Pharmacopeia Basket Sinker.	-
SNK020-VK	20 Mesh Basket Sinker with lid.	-
SNK080-VK	80 Mesh Basket Sinker with lid	12-3064
BSK008-01	8 Mesh Basket Sinker with lid	302-9050-6
BSK008-JP	8 Mesh Basket Sinker Japanese Pharmacopeia Size	302-9066-6
SNK008-VK	8 Mesh Basket Sinker with lid VanKel (Varian) Style	12-3062
SNK010-VK	10 Mesh Basket Sinker with lid VanKel (Varian) Style	12-3060
SNK040-VK	40 Mesh Basket Sinker with lid VanKel (Varian) Style	12-3064



CUSBSK-JP



BSK008-01



SNK008-VK

### Spiral/Coil

Part No.	Description	OEM ref
CAPWHT-2S	Stainless Steel with 6 spirals, 21.3 x 9.4mm capacity	302-9051-6
CAPWST-23	Stainless Steel with 7 spirals, 23 x 8mm capacity	6881
CAPWST-31	Stainless Steel with 10 spirals, 31 x 11mm capacity	7349
CAPWHT-XLSS	Stainless Steel with 4 spirals, 22.5 x 11.8mm capacity	-
CAPWHT-XLS	Stainless Steel with 4 spirals, 29.2 x 11.8mm capacity	-
CAPWST-19	Stainless Steel with 6 spirals, 19.3 x 7mm capacity	8283
CAPWST-18	Stainless Steel with 8 spirals, 18 x 6mm capacity	7346
CAPWHT-02	PTFE coated with 6 spirals, 21.3 x 9.4mm capacity	302-9061-6
CAPWHT-04	PTFE coated with 6 spirals, 21.4 x 9.8mm capacity	302-9060-6



CAPWHT-2S



CAPWHT-XLSS



CAPWST-19

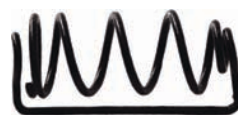


CAPWHT-04

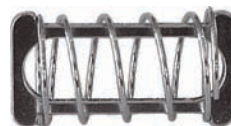


## Spiral/Coil *continued*

Part No.	Description	OEM ref
CAPWHT-4S	Stainless Steel with 4 spirals, 21.3 x 9.8mm capacity	302-9050-6
CAPWHT-LG	PTFE coated with 4 spirals, 27.9 x 10.4mm capacity	1302-9062-6
CAPWHT-XL	PTFE coated with 4 spirals, 29.2 x 11.8mm capacity	-
CAPWHT-XS	Stainless Steel with 6 spirals, 22.5 x 14.7mm capacity	302-9053-6
CAPWST-15	Stainless Steel with 4 spirals, 15.5 x 5mm capacity	8280



CAPWHT-XL



CAPWST-15

## Pronged

Part No.	Description	OEM ref
CAPWHT-VK	3 pronged capsule sinker VanKel (Varian) style. Plastic.	-
MAGWHT-VK	3 pronged capsule sinker VanKel (Varian) style. Magnetic legs.	12-3056
CAPWHT-SV	3 pronged capsule sinker Stainless Steel	-
MAGWHT-VKTOP	3 pronged capsule sinker VanKel (Varian) style. Magnetic top.	12-3055



## Breath Film and Others

Part No.	Description	OEM ref
CAPWHT-PC	Breath film sinker	-
CAPWHT-TR	Time release butterfly sinker	302-9065-6
CAPWHT-S99	O-Ring Sinker 316 stainless steel 11.8 x 25.8mm capacity	-
WIRESK-VK	Type 316 Stainless Steel wire	12-3000
CUSBSK-ALF	Alfuzosin Hydrochloride Extended-Release Tablets Cylinder Sinker. USP Compliant	-



CAPWHT-PC



CAPWHT-TR



CUSBSK-ALF

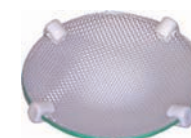


CAPWHT-S99

### Can't find what you're looking for?

It's not a problem, there are many other options available for capsule sinkers, and we can manufacture and supply plenty of other sizes and types. Just let us know what it is that you need, and we'll do the rest.

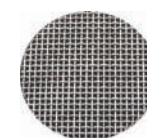
Part No.	Description	OEM ref
APPFIVE-HR	USP5 Watch Glass Transdermal Patch Holder with 17 Mesh Screen	65-190-093
APPFIVE-V80	USP5 Transdermal Patch Holder 16 Mesh, 80mm Diameter for Paddle over Disk	12-4200
APPFIVE-V56	USP5 Transdermal Patch Holder 56mm, 120 Mesh. Paddle over Disk.	12-4200
APPFIVE-V35	USP5 Transdermal Patch Holder, 35mm 40 Mesh. Outer diameter is 41.2mm	12-4200
APPFIVE-HRSCR	Replacement 17 Mesh PTFE Screen for APPFIVE-HR	65-190-190
APP5S16-35	USP5 16 Mesh Replacement Screen for APPFIVE-V35	-
APPFIVE-HRCLIP	Replacement Plastic Clip for APPFIVE-HR	65-190-205



APPFIVE-HR



APPFIVE-V35



APP5S16-35



APPFIVE-HRCLIP

## Tubing

Part No.	Description	OEM ref
PPTUBD-01	Santoprene Peristaltic Pump Tubing (SET/6) for Distek Automated Systems	5640-0337
PPTUBV-01	Santoprene Peristaltic Pump Tubing (SET/8).	17-6000
PPTUBV-02	Silicone Peristaltic Pump Tubing (SET/8).	17-6010
TAATUB-HP	3 Collar Tygon Auto Analyzer Tubing, 2.06mm ID (SET/12)	5041-2166
TEFTUB-8V	8 Color-Coded PTFE Tubing, .066 inch OD/.042 inch ID, (50 Foot Length)	17-6035
TEFTUB-HP	FEP PTFE Tubing. 1/32 inch ID x 1/16 inch OD, (500 Foot Roll), for any application.	-
TUBING	Tygon Tubing, 1/16" x 1/8", (Sold by Foot)	-



PPTUBD-01



TAATUB-HP



TEFTUB-HP



TUBING

### Can't find what you're looking for?

It's not a problem, there are many other options available for tubing and we can manufacture and supply plenty of other sizes and types. Just let us know what it is that you need, and we'll do the rest.

## Storage Racks and Holders

Part No.	Description	OEM ref
SHAFTTOOL	For ensuring a tight connection with spin-on/spin-off paddles and baskets.	-
EVERCLEAR-12	Water Bath Algaecide - Add the contents of one tube to a water bath every 2-3 months.	-
VESSTD-06H	Stackable universal vessel stand for 6 vessels.	-
VESSTD-08H	Stackable universal vessel stand for 8 vessels.	-
BSKHLD-6	6 position basket holder	-
BSKHLD-12	12 position basket holder	-
PADHLD-12A	Racks for storing 12 dissolution paddle and basket shafts	-
PADHLD-16	Racks for storing 12 dissolution paddle and basket shafts	-



SHAFTTOOL



6 Position basket holder



12 position shaft rack



6 position vessel stand

## Transdermal USP 5 & 6

Part No.	Description	OEM ref
APPSIX-01	USP 6 rotating cylinder without extension for transdermal testing. Compatible with Distek, Hanson and Varian (VanKel)	12-1360
APPSIX-EX	USP6 Rotating Cylinder Extension. Use with APPSIX-01	-
TRANDE-SC	Custom wide mesh screen for large Transdermal Applications	-
74-105-240	USP 6 rotating cylinder without extension. Compatible with Hanson Vision Series	74-105-240
74-105-241	USP 6 rotating cylinder with extension. Compatible with Hanson Vision Series	74-105-241



TRANDE-SC



APPSIX-EX



74-105-241

## Custom Manufacturing

We understand that there are several different manufactures of dissolution and disintegration testers out there, and each one offers their own parts and consumables. Sometimes the parts are interchangeable, but sometimes they are not. Sometimes you might not have the OEM number, or the common OEM is not the same as the brand you use.

But don't worry, this isn't a problem, because we can source the correct part that will fit with your machine,

As long as you know the make and model of the equipment you require parts for, we can help, so if you cannot find the item you're looking for in this catalogue, then drop us a line and we'll quickly find it for you. And if it's not available, there is also a chance that we can have it specially recreated.



## Disintegration Accessories

### Erweka Baskets

Part No.	Description	OEM ref
17860	Basket assembly with 6 glass tubes for Erweka	17860
17863	Basket assembly with 3 glass tubes for Erweka	17863



17860



17863

### Vankel/Varian/Agilent Baskets

Part No.	Description	OEM ref
DISASY-03	Basket assembly with 3 glass tubes for Vankel	37-5005
DISASY-06	Basket assembly with 6 glass tubes for Vankel	37-2001
DISASY-P6	Basket assembly with 6 plastic tubes for Vankel	-



DISASY-06



DISASY-03

## Disintegration Tubes & Glassware

Part No.	Description	OEM ref
DISDISK-03	EP disintegration disk set (3)	-
FDISK-VK	Fluted disintegration discs for 6 tube assembly. USP certified.	37-4000
DISTUB-06	Glass disintegration tubes for 6 tube assembly. Diameter 25mm	37-5000
DISTUB-P6	Plastic disintegration tubes for 6 tube assembly.	-
GLA900-DB	900ml disintegration beaker flared top.	37-5200
GLA905-DB	900ml disintegration beaker flat top.	37-5305



## Dissolution Filters

### Caleva

Part No.	Description	OEM ref
FIL001-CA-100	1µm Cannula Filters Poroplast.	810100
FIL004-CA-100	4µm Cannula Filters Poroplast.	90-000-0023
FIL010-CA-100	10µm Cannula Filters UHMW Polyethylene	810106
FIL035-CA-100	35µm Cannula Filters UHMW Polyethylene	810142
FIL040-CA-100	40µm Cannula Filters UHMW Polyethylene	-
FIL070-CA-100	70µm Cannula Filters UHMW Polyethylene	-



### Distek

Part No.	Description	OEM ref
FIL010-DK	10µm 0.310" Filter Discs UHMW Polyethylene	5720-0203
FIL045-DK	45µm 0.310" Filter Discs UHMW Polyethylene	5720-0275
FIL070-DK	70µm 0.310" Filter Discs UHMW Polyethylene	-
FIL090-DK	90µm 0.310" Filter Discs UHMW Polyethylene	-
FIL10S-DK-100	10µm External Probe End Filters UHMW Polyethylene	5720-0500



## Vankel/Varian/Agilent continued

Part No.	Description	OEM ref
CAN775-01	7.75" (195mm) bent SS cannula with luer adapter, for 500ml sampling, 0.083" (2.1mm) OD	12-3210
CA8775-VK	7.75" (195mm) bent SS cannula with luer adapter, for 500ml sampling, 0.125 (3.2mm) diameter.	-
CA8015-PV	15" (380mm) bent PEEK cannula with Luer adapter, through head mount, 1/8" (3.2mm) OD	-
CA8015-VK	15" (380mm) bent SS cannula with Luer adapter, through head mount, 1/8" (3.2mm) OD	-
CANSTP082-70XDS	Adjustable Cannula Stopper 0.086 (2.2mm) hole, with screw adjustment for Agilent 708-DS	-
CAVSTP-VK	Cannula Stopper for VanKel 'V' Series Baths	-
CA8STP-VK	Cannula Stopper 0.150 (3.8mm) hole	-
CANSTP-VK	Adjustable Cannula Stopper 0.086 (2.2mm) hole, with screw adjustment	-
CANSTP-078-31	Cannula Stopper for VanKel 2.1mm Cannulae. Fits in VanKel vessel Cover.	-
CANSTP-142-31	Cannula Stopper for VanKel 3.2mm (1/8") Cannulae with Tygon sleeve. Fits in VanKel vessel Cover	-
PROBEX-VK	500ml Cannula Extension Kit for VanKel	17-3306



### Can't find what you're looking for?

It's not a problem, there are many other options available for Cannulae and stoppers, and we can manufacture and supply plenty of other sizes and types. Just let us know what it is that you need, and we'll do the rest.





## Sotax

Part No.	Description	OEM ref
CAN013-ST	13" Bent Cannula with Luer Adapter Through Head Mount	-
CAN013-ST-5	13" Stainless Steel Cannula inc. Stopper and Sleeve for 500ml Sampling	-
CAN013-ST-9	13" Stainless Steel Cannula inc. Stopper and Sleeve for 900ml Sampling	-
PRBFSR-ST	Combined Sample/Return Cannula with Filter Housing. Through Head Mounting	-
PRBNSR-ST	Combined Sample/Return Cannula without Filter Housing for Through Head Mounting	-
CANSTP-ST	Adjustable Cannula Stopper (use with CAN013-ST). Through the head mounting.	-



## Vankel/Varian/Agilent

Part No.	Description	OEM ref
CANRET-25	2.5" (65mm) Autosampling Return Cannula	17-3320
CAN900-45	Autosampling Cannula for automatic dissolution system	17-3300
CAN475-01	4.75" (120mm) bent SS cannula with luer adapter, for 900ml sampling.	-
CAN475-PH-V	4.75" (120mm) bent PEEK cannula with luer adapter, for 900ml sampling.	-
CA8475-PV	4.75" (120mm) bent PEEK cannula with luer adapter, for 900ml sampling. 0.125 (3.2mm) diameter.	-
CA8475-VK	4.75" (120mm) bent SS cannula with luer adapter, for 900ml sampling. 0.125 (3.2mm) diameter.	-
CAN500-60	6.5" (165MM) Autosampling Cannula	17-3305
CA8775-PV	7.75" (195mm) bent PEEK cannula with luer adapter, for 500ml sampling, 0.125 (3.2mm) diameter.	-



## Distek continued

Part No.	Description	OEM ref
FIL20S-DK-100	20µm UHMW Polyethylene External Probe End Filters	-
FIL35S-DK-100	35µm External Probe End Filters UHMW Polyethylene	5720-0220
FIL45S-DK-100	45µm External Probe End Filters UHMW Polyethylene	5720-0020
FIL70S-DK-100	70µm External Probe End Filters UHMW Polyethylene	5720-0502



FIL20S-DK-100

## Erweka

Part No.	Description	OEM ref
FIL001-EW-100	1µm Cannula Filters Poroplast.	90-000-0013
FIL004-EW-100	4µm Cannula Filters Poroplast	90-000-0023
FIL010-EW-100	10µm Cannula Filters UHMW Polyethylene	90-000-0033
FIL035-EW-100	35µm Cannula Filters UHMW Polyethylene	-
FIL040-EW-100	40µm Cannula Filters UHMW Polyethylene	-
FIL070-EW-100	70µm Cannula Filters UHMW Polyethylene	-
FIL020-EW-100	20µm Cannula Filters UHMW Polyethylene	-



FIL001-EW-100



FIL070-EW-100

## Hanson

Part No.	Description	OEM ref
FIL001-HR-100	1µm Cannula Filters Poroplast.	27-101-087
FIL004-HR-100	4µm Cannula Filters Poroplast	27-101-088
FIL010-HR-100	10µm Cannula Filters UHMW Polyethylene	27-101-074
FIL10S-HR-100	10µm (1/16 ID) Cannula Filters UHMW Polyethylene	27-101-083
FIL020-HR-100	20µm Cannula Filters UHMW Polyethylene	-
FIL20S-HR	20µm UHMW Polyethylene Cannula Filters 1/16" (1.6mm ID)	-
FIL035-HR-100	35µm Cannula Filters UHMW Polyethylene	27-101-085



FIL001-HR-100



FIL035-HR-100

## Hanson continued

Part No.	Description	OEM ref
FIL35S-HR-100	35µm (1/16 ID) Cannula Filters UHMW Polyethylene	27-101-086
FIL045-HR-100	45µm Cannula Filters UHMW Polyethylene	27-101-089
FIL45S-HR-100	45µm (1/16 ID) Cannula Filters UHMW Polyethylene	27-101-090
FIL070-HR-100	70µm Cannula Filters UHMW Polyethylene	27-101-082
FIL70S-HR-100	70µm UHMW Polyethylene Cannula Filters 1/16" (1.6mm ID)	27-101-084



## Pharmatest

Part No.	Description	OEM ref
FIL001-PT-100	1µm Cannula Filters Poroplast	-
FIL004-PT-100	4µm Cannula Filters Poroplast	-
FIL005-PT-100	5µm Cannula Filters UHMW Polyethylene	31-63511-50
FIL010-PT-100	10µm Cannula Filters UHMW Polyethylene	31-63211-50
FIL020-PT-100	20µm Cannula Filters UHMW Polyethylene	-
FIL035-PT-100	35µm Cannula Filters UHMW Polyethylene	31-63211-50
FIL070-PT-100	70µm Cannula Filters UHMW Polyethylene	-



## Sotax

Part No.	Description	OEM ref
FIL010-SX-100	10µm Cannula Filters UHMW Polyethylene	27-101-074
FIL020-ST-100	20µm Cannula Filters UHMW Polyethylene	-
FIL035-SX-100	35µm Cannula Filters UHMW Polyethylene	27-101-085
FIL070-SX-100	70µm Cannula Filters UHMW Polyethylene	27-101-082



## Hanson continued

Part No.	Description	OEM ref
CAN900-HR2	Fixed Vessel Mount 1/16" Stainless Steel Sampling Cannula for 900ml Sampling Hanson Research Vision Series	74-104-203
CAN500-HR2	Fixed Vessel Mount 1/16" Stainless Steel Sampling Cannula for 500ml Sampling Hanson Research Vision Series	74-104-204
CANADJ-HR2	Adjustable 1/16" Stainless Steel Sampling Cannula Fixed Vessel Mount, Hanson Research Vision Series	74-104-204
RCSV-HR	Adjustable 1/16" Stainless Steel Sampling Cannula Fixed Vessel Mount, Hanson Research Vision Series	74-104-211
6THD90-HR	1/8" PEEK Auto-Mag, Auto-Probes. Hanson Vision Series. Set of 8	74-104-206 74-104-208
MCAN2-HR	1/8" PEEK Cannula with Luer Adapter and Stopper for Manual Sampling with Hanson Vision Series	74-104-201
CANSTP-HR	Adjustable Cannula Stopper with thumb-screw adjustment to set cannula height.	-
STPR-HR	Cannula Stopper for Hanson Vision Series 1/16" Cannulae.	74-104-205



## Pharmatest

Part No.	Description	OEM ref
CAN475-PH-P	4.75" Bent PEEK Cannula with Luer Adapter for 900ml Manual Sampling	-
CAN475-SH-P	4.75" Bent Cannula with Luer Adapter for 900ml Manual Sampling	-
CAN775-PH-P	4.75" Bent PEEK Cannula with Luer Adapter for 900ml Manual Sampling	-
CAN775-SH-P	4.75" Bent Cannula with Luer Adapter for 500ml Manual Sampling	-
CANSTP-PT	Adjustable Cannula Stopper	-



## Erweka continued

Part No.	Description	OEM ref
CAN775-PH-E	7.75" Bent Cannula with Luer Adapter for 500ml Manual Sampling	-
CAN015-SH-E	15" Bent Cannula with Luer Adapter Through Head Mount	-
CAN475-SH-E	7.75" Bent Stainless Steel Cannula with Luer Adapter for 500ml Manual Sampling	-
CANSTP-EW2	Cannula Stopper for Erweka 2.1mm Cannulae. Fits in Erweka vessel Cover.	-
CANSTP-EW	Adjustable Cannula Stopper for Erweka. For 'Through Head' mounting only. Use with CAN015-SH-E.	-



## Hanson

Part No.	Description	OEM ref
CAN475-HR	4.75" Bent Thin Cannula with Luer Adapter and Permanent Tip	-
CAN475-SH	4.75" Bent Cannula with Luer Adapter for 900ml Manual Sampling	-
CAN475-PH	4.75" Bent PEEK Cannula with Luer Adapter for 900ml Manual Sampling	-
CAN775-SH	7.75" Bent Cannula with Luer Adapter for 500ml Manual Sampling	-
CAN775-HR	7.75" Bent Thin Cannula with Luer Adapter and Permanent Tip	-
CAN775-PH	7.75" Bent PEEK Cannula with Luer Adapter for 500ml	-
CANS15-PH	15" Straight Cannula with Luer Adapter	-
CAN015-HR	15" Bent Thin Cannula with Luer Adapter and Permanent Tip.	-
CAN015-SH	15" Bent Cannula with Luer Adapter Through Head Mount	-
CAN015-PH	15" Bent PEEK Cannula with Luer Adapter Through Head Mount	-



## Vankel/Varian/Agilent

Part No.	Description	OEM ref
FILTIP-02	2µm Filter Tips.	17-4100
FILTIP-05	5µm Filter Tips	17-4110
FIL010-01-100	10µm Cannula Filters UHMW Polyethylene	17-4000
FIL010-VK-100	10µm Direct Fit Cannula Filters UHMW Polyethylene. Fit Vankel sample cannulae with no sleeves	-
FILTIP-10	10µm Filter Tips.	17-4120
FIL010-01K-100	10µm Cannula Filters PVDF	17-4050
FILTIP-20	20µm Filter Tips	17-4100
FIL020-01-100	20µm Cannula Filters UHMW Polyethylene	-
FIL035-VK-100	35µm Direct Fit Cannula Filters UHMW Polyethylene. Fit Vankel sample cannulae with no sleeves	-
FIL035-01-100	35µm Cannula Filters UHMW Polyethylene	17-4010
FIL035-01K-100	35µm Cannula Filters PVDF	17-4050
FILTIP-45	45µm Filter Tips	17-4100
FIL045-01-100	45µm Cannula Filters UHMW Polyethylene	-
FIL070-01-100	70µm Cannula Filters UHMW Polyethylene	17-4020
FIL070-VK-100	70µm Direct Fit Cannula Filters UHMW Polyethylene. Fit Vankel sample cannulae with no sleeves	-



## Can't find what you're looking for?

It's not a problem, there are many other options available for dissolution filters, and we can manufacture and supply plenty of other sizes and types. Just let us know what it is that you need, and we'll do the rest.





## Intrinsic Dissolution

### Woods Apparatus

Part No.	Description	OEM ref
IDASET-xx	Intrinsic Dissolution Apparatus - Complete Set. Includes Shaft & Holder, Punch, 8mm Die, Gasket and Surface Plate.	-
IDASNH-xx	Intrinsic Dissolution Shaft and Holder, 316 Stainless Steel Electropolished	-
IDAPLT-01	8mm Intrinsic Dissolution Punch and Handle	12-4120
IDAPCH-01	8mm Intrinsic Dissolution Punch and Handle	12-4140
IDADIE-01	8mm Intrinsic Dissolution Die includes gasket, 316 Stainless Steel, Electropolished	-
IDAGST-01	Gasket for Intrinsic Dissolution Surface Plate	-



## Paddles

### Distek

Part No.	Description	OEM ref
EPD016-02	16.5 inch Stainless Steel Paddle	2800-0100
NPD016-02	16.5 inch PTFE Coated Paddle	2800-0002
TPD016-02	16.5 inch Solid PTFE Paddle one piece moulded design	-
SHFT16.5-DK	16.5" Detachable Shaft. Connects with hub BSKHUB-DK	2800-0165
PDLBLD-DK	Replacement Paddle Blade. Use with SHFT16.5-DK.	3251-1050-SN-CERT
MINPSHAFT-NPD	Mini Paddle, PTFE Coated	-
MINPSHAFT	Mini Paddle, Stainless Steel	-
PDLBLD-NPD	Replacement PTFE Coated Paddle Blade. Use with SHFT16.5-DK	3251-1050-T-SN
SHTCOL-DK	Shaft Collar, 3/8" with Hex key	-



### Distek continued

Part No.	Description	OEM ref
CAN500-DV	High capacity sampling cannula for 500ml	-
CAN900-DV	High capacity sampling cannula for 900ml	-
CAN5PK-DK	High capacity PEEK sampling cannula	-
CAN01K-DV	High capacity sampling cannula for 1000ml	-
CAN02K-DK	Resident Sampling Probe for Distek. Use with 2000ml	2910-1800
CAN500-DSH	500ml Resident Cannula. Lower hold-up volume for use with cannula filters only	2910-0506
CAN900-DSH	900ml Resident Cannula. Lower hold-up volume for use with cannula filters only	2910-0906
PRBFSR-DK	Combined Sample/Return Cannula with Filter Housing	-
PRBNSR-DK	Combined Sample/Return Cannula without Filter Housing	-
CANRET-DK	Return Probe for Automated Dissolution Systems	2901-0001
CANSTP-065-53	Distek/Hanson 1/16" (1.6mm) Self-Tightening Cannula Stopper	-
FILASY-DK	Inline Filter Housing Assembly for Distek Style Filters	-
LE87-6	Male Luer to Female Luer, Thread Style Elbow	5720-9074
SFTL-6	Female Luer Lug Style with 5/16" Hex to 1/4-28 UNF Thread	5720-9059
SMTLL-6	Male Luer Integral Lock Ring to 1/4-28 UNF Thread	5720-9060



### Erweka

Part No.	Description	OEM ref
CAN015-PH-E	15" Bent Cannula with Luer Adapter Through Head Mount	-
CAN475-PH-E	4.75" Bent PEEK Cannula with Luer Adapter for 900ml Manual Sampling	-



## Custom paddles made to your specification...

Can't find what you're looking for? It's not a problem, there are many other options available for dissolution paddles, and we can manufacture and supply plenty of other USP 2 apparatus. Just let us know what it is that you need, and we'll do the rest.



## Erweka

Part No.	Description	OEM ref
22403	Paddle, stainless steel, numbered	22403
22404	Paddle (PTFE coated) for 1000 ml, numbered	22404
22405	Paddle (PTFE coated) for 2000 ml, numbered	22405



## Hanson

Part No.	Description	OEM ref
EPD016-01	16 inch Stainless Steel Paddle	65-700-036
MINPSHAFT	Mini Paddle, Stainless Steel	-
MINPSHAFT-NPD	Mini Paddle, PTFE Coated	-
TPD016-01	16 inch Solid PTFE Paddle one piece moulded design	72-800-456
NPD016-01	16 inch PTFE Coated Paddle	65-700-030
TPD018-01	18 inch Solid PTFE Paddle one piece moulded design	72-800-461



## Vankel/Varian/Agilent

Part No.	Description	OEM ref
EPD015-01	15 inch Stainless Steel Paddle	12-1030
MINPSHAFT	Mini Paddle, Stainless Steel	-
MINPSHAFT-NPD	Mini Paddle, PTFE Coated	-
NPD024-01	24 inch PTFE Coated Paddle	12-1010
NPD021-01	21 inch PTFE Coated Paddle	12-1010
EPD024-01	24 inch Stainless Steel Paddle	12-1045
EPD021-01	21 inch Stainless Steel Paddle	12-1150
TPD013-01	14.5 inch Solid PTFE Paddle one piece moulded design	-
NPD013-01	14.5 inch PTFE Coated Paddle for V-Series	12-1005
EPD013-01	14.5 inch Stainless Steel Paddle for V-Series	12-1035
TPD019-01	19 inch Solid PTFE Paddle one piece moulded design	-
TPD015-01	15 inch Solid PTFE Paddle one piece moulded design	12-1200
NPD019-01	19 inch PTFE Coated Paddle	12-1010
NPD015-01	15 inch PTFE Coated Paddle	12-1000
EPD019-01	19 inch Stainless Steel Paddle	12-1040



## Sampling Cannulae & Stoppers

### Caleva

Part No.	Description	OEM ref
CAN475-SH-C	120mm (4.75") Bent Stainless Steel Cannula with Luer Adapter, for 900ml Manual Sampling	-
CAN775-SH-C	195mm (7.75") Bent Stainless Steel Cannula with Luer Adapter, for 500ml Manual Sampling	-
CAN475-PH-C	120mm (4.75") Bent PEEK Cannula with Luer Adapter, for 900ml Manual Sampling	-
CAN775-PH-C	195mm (7.75") Bent PEEK Cannula with Luer Adapter, for 500ml Manual Sampling	-
CANSTP-CA	Adjustable Cannula Stopper	-

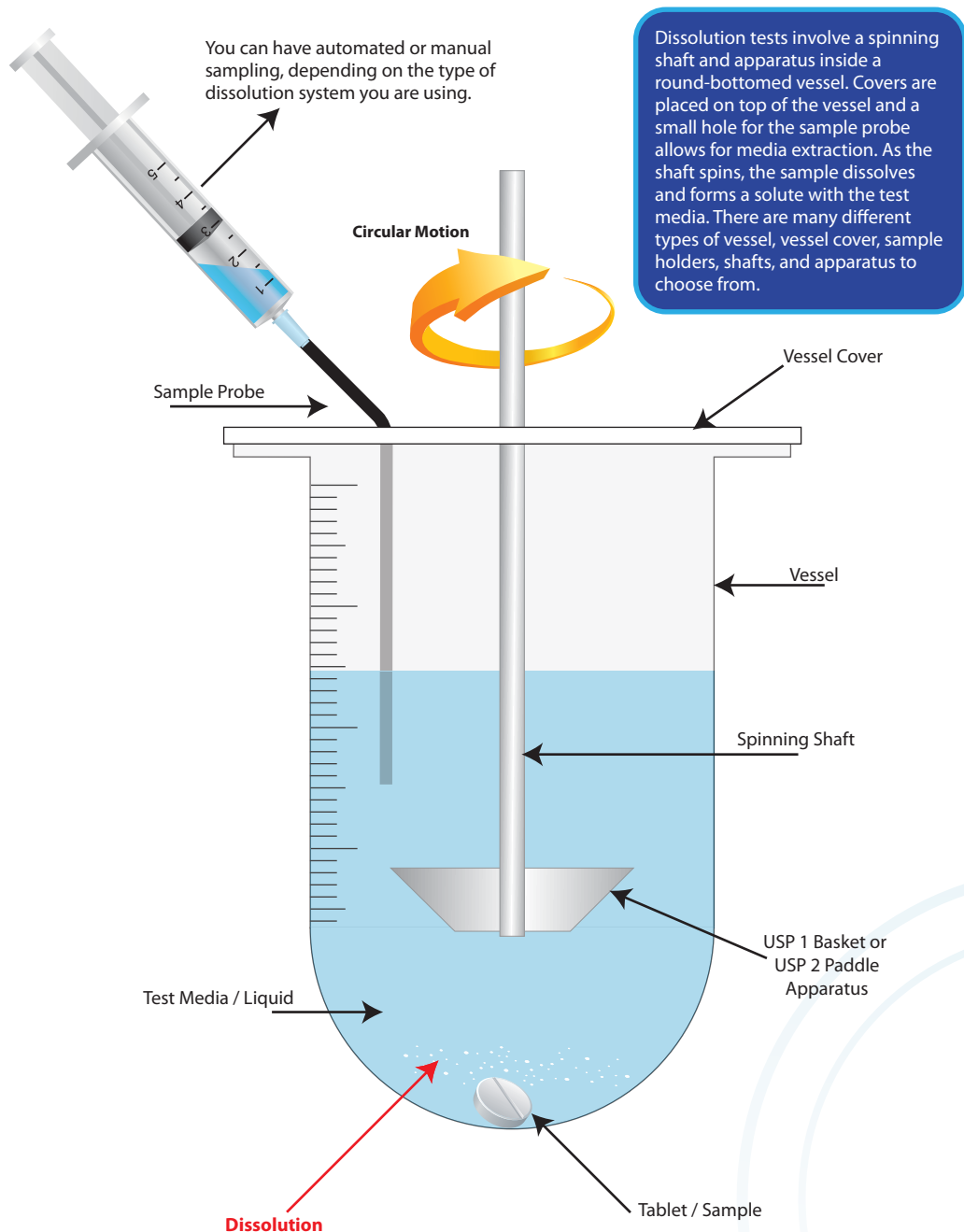


### Distek

Part No.	Description	OEM ref
CAN500-DK	500ml Sampling Probe	2910-0500
CAN900-DK	900ml Sampling Probe	2910-0900
CAN01K-DK	1000ml Sampling Probe	2910-1000
CAN5PK-DK16	500ml PEEK Sampling Probe, 1/16" (1.6mm) OD	-
CAN9PK-DK8	900ml PEEK Sampling Probe, 1/8" (3.2mm) OD	-
CANRET-DK	Return Probe	2910-0001



## Dissolution Basics



## Disintegration Basics

Disintegration baskets come in either Type A configuration or Type B. Type A has 6 glass tubes, and Type B has three. Type B is commonly used for European Pharmacopeia testing. All basket tubes have a mesh bottom and come with small disks that keep the sample submerged in the tube. The entire basket dips in and out of a flat-bottomed beaker, allowing the samples to break apart.

### Pharmacopeias

These are the compliance organisations that dictate test standards, equipment and methods commonly used around the world. The most commonly referred are:

United States Pharmacopeia (USP)  
European Pharmacopeia (EP)  
Japanese Pharmacopeia (JP)

